



4 Bluegum Court, Bright VIC 3741

doubledayrealestate.com.au

Doubleday

REAL ESTATE



Premier Alpine Escape...

At the centre of approximately 4,500 square metres of park like gardens and established trees, overlooking the beautiful alpine town of Bright, is an impeccably designed and dramatic 30+ sq 2 level home. This extra special property is simply stunning, boasting spectacular valley and mountain views, located in one of Bright's finest locations, adjoining Stacky Gully Creek Bushland.

The primary residence comprises: 4 bedrooms, 2 bathrooms, office / bedroom, open plan living and TV room, bright modern kitchen, a large separate dining area, laundry and several store rooms over looking a stunning pool and entertaining area and raised garden beds.

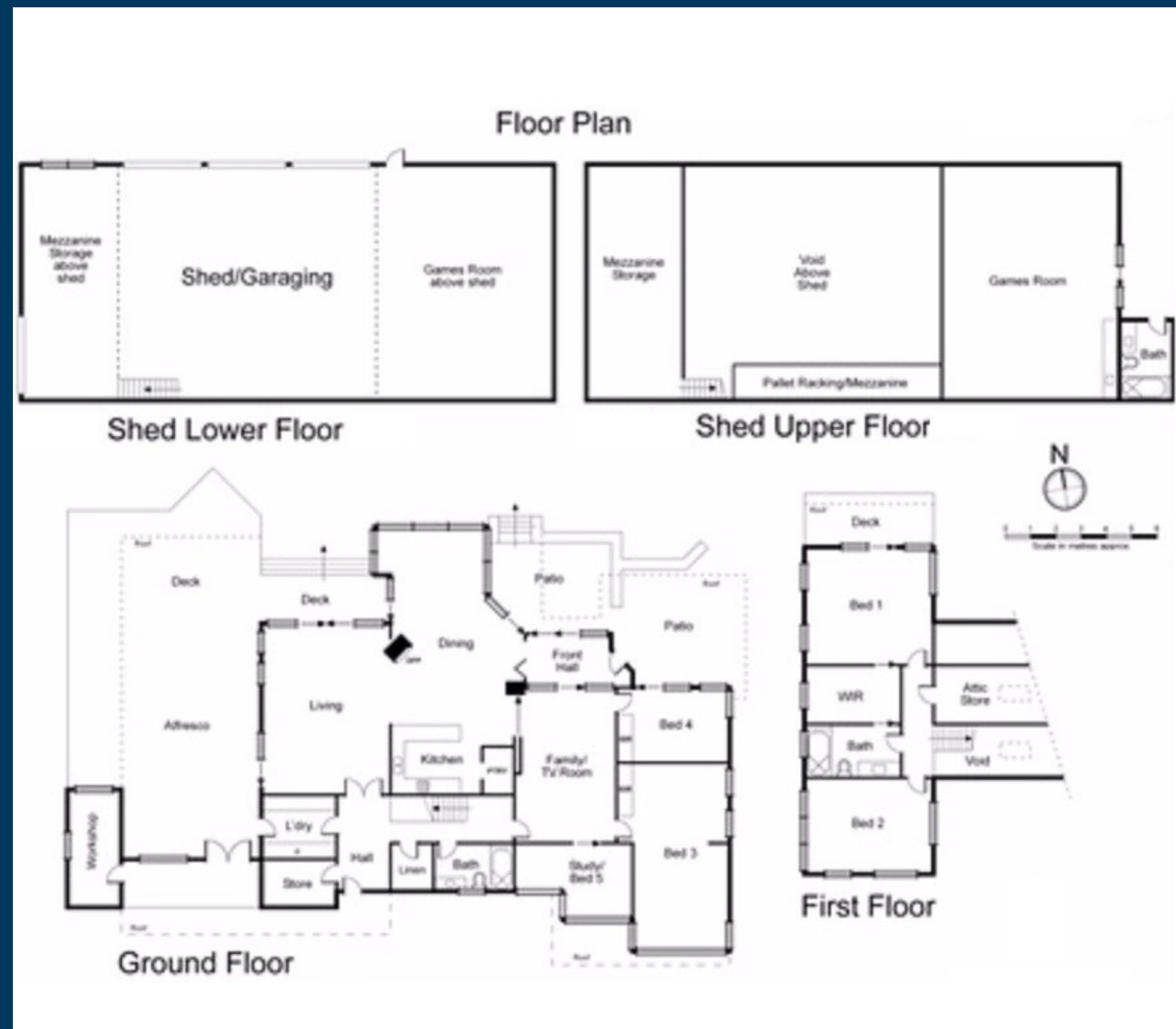
An elegant entry foyer leads through to luxurious dining and living areas and modern kitchen with large walk in pantry and dishwasher. Enjoy large family feasts with friends by the wood fire in the spectacular dining area with soaring ceilings looking out the huge double glazed windows at the magnificent garden, framing the beautiful mountain views beyond. You can even see snow covered Mt Bogong in winter from the front yard.

The elegant large master bedroom upstairs has its own large balcony and even more spectacular valley views with adjoining walk in robe and ensuite. Upstairs also includes another bedroom /study and attic storeroom. The 2 main downstairs bedrooms have built in robes, with one as an extra -large bedroom to fit a queen size bed and 2 singles. The many features of this home include double glazing, electric slab heating, a reverse cycle split system, wall mounted panel heating in bedrooms, and an abundance of internal and external storage, as well as solar panels and a workshop/ studio.

Extensive patio, decking and verandah areas provide large outdoor under-cover entertaining areas allowing sunshine and views at different times of the day, admiring the garden and pool. Your very own private and exclusive resort area to get away from the crowds and enjoy the serenity and amazing views.

Toward the bottom of the garden is a mammoth garage with up to 6 car bays, a huge industrial like engineering workshop with hoist, many covered work and storage areas AND adjoining self contained accommodation including mezzanine area, games room, mini kitchen and bathroom. Should you need further room, yet another oversized caravan garage/ studio offers plenty more automotive storage and even more space to create and relax. Around the site there are a further 6 undercover car parking areas.

In addition to the extensive terraced easy walking grounds, you will be able to enjoy the large inground pool and large shady gazebo area (with 360 degrees views of mountains) surrounded by raised veggie garden beds and glass fence, adjacent to large concrete water storage.



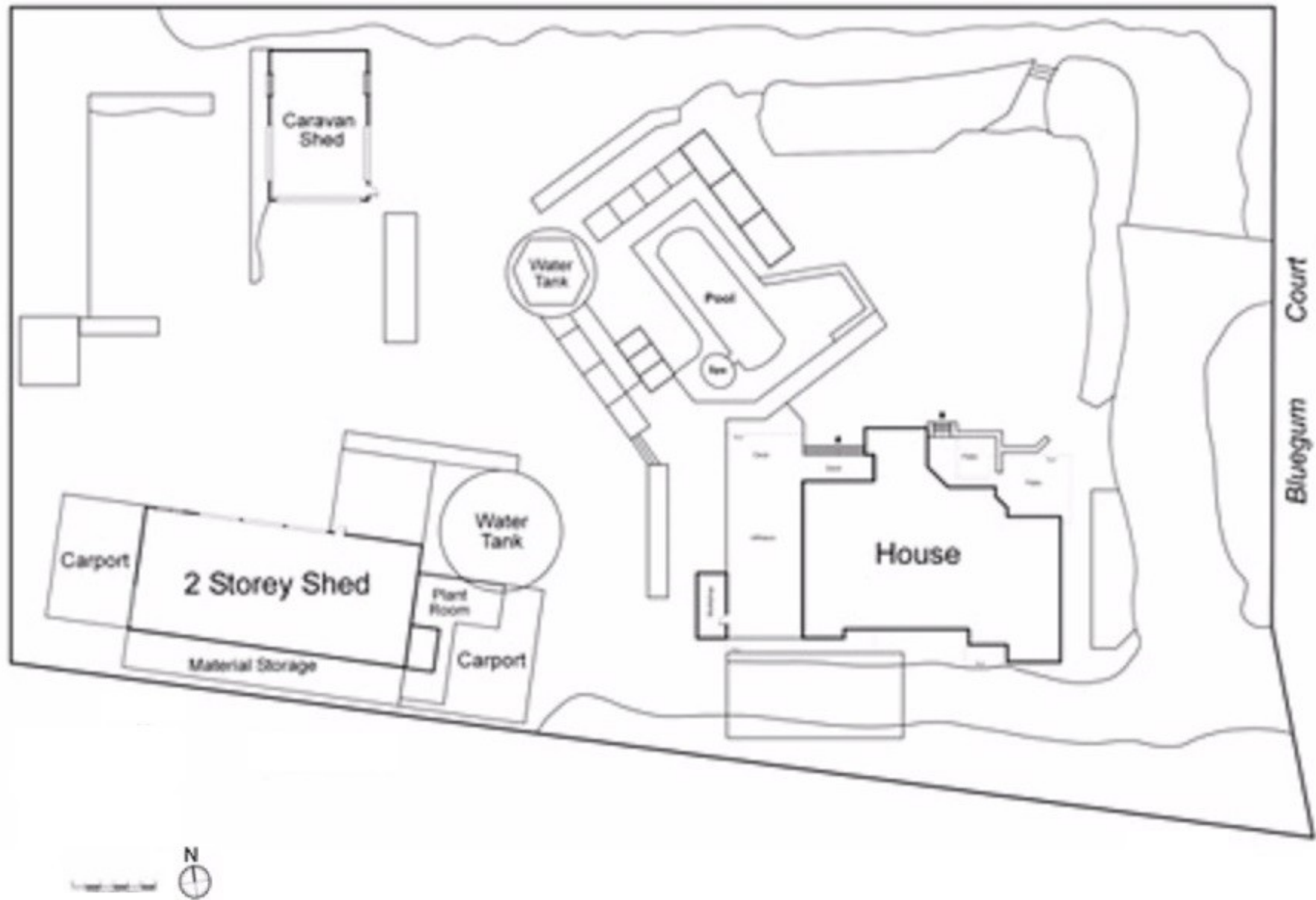
The established garden has many delightful corners for keen gardeners and guests to relax in, the shady circular seat under the Japanese maple, the dogwood, camellia and azalea garden that looks magnificent in Spring and Autumn, the rainforest treed walkway, the dappled silver birch grove, the cherry, plum and citrus walks.

The garden is easy to maintain, with semi-automated watering systems throughout, fed from tank water (over 160,000 litres) to keep it green and lush all year.

Every corner will delight. Thoughtful, thorough, comprehensive.

An inspection is a must!

Site Plan



FOR SALE

doubledayrealestate.com.au

for details and inspections contact

Sasha Romensky

Anthony Collopy

0401 903 144

0418 523 828

Should this property meet your requirements, please register your interest with our agent so that we can keep you informed about the progress of the sale. If you have a property to sell please advise our agent so that we may be able to assist you with co-ordinating the sale or settlement. The floor plan is for indicative purposes only and is not to exact scale.